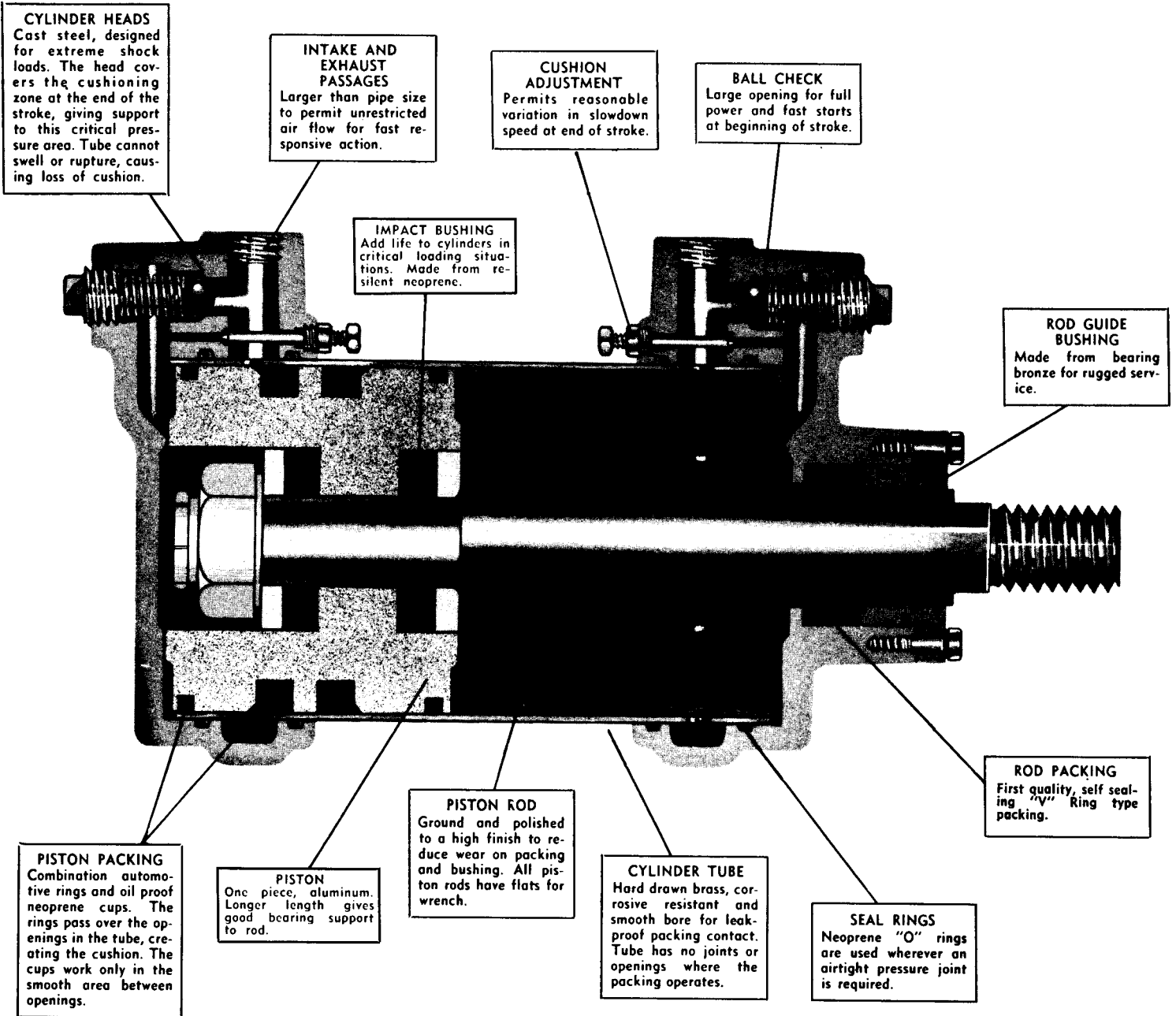


# KIMWOOD HEAVY DUTY 4" & 6" AIR CYLINDERS

For Operating Pressures Up To 250 psi



*Steel Heads!*

*Integral Mountings!*

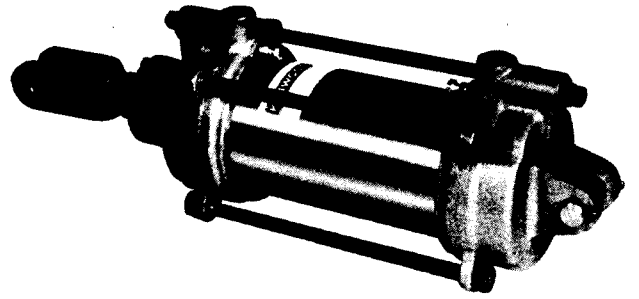
*Adjustable Cushions!*

*Impact Bushings!*

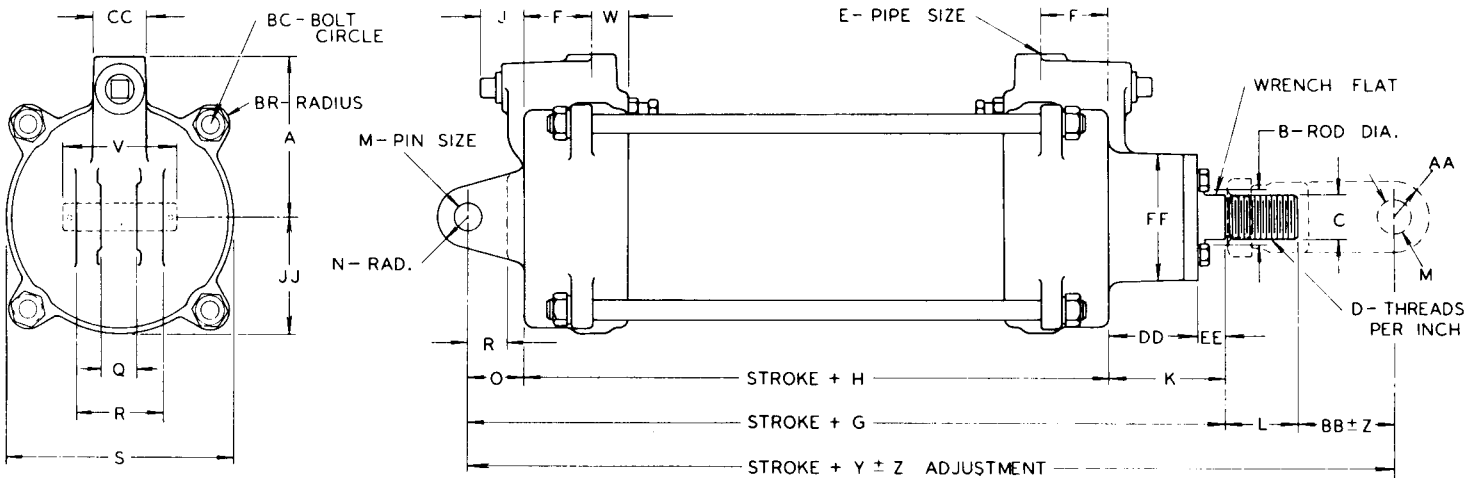
*One-Piece Piston!*

*Combination Packing!*

# Style No. 7 PENDULUM MOUNTED



## 250 PSI – STEEL HEADS AND MOUNTINGS

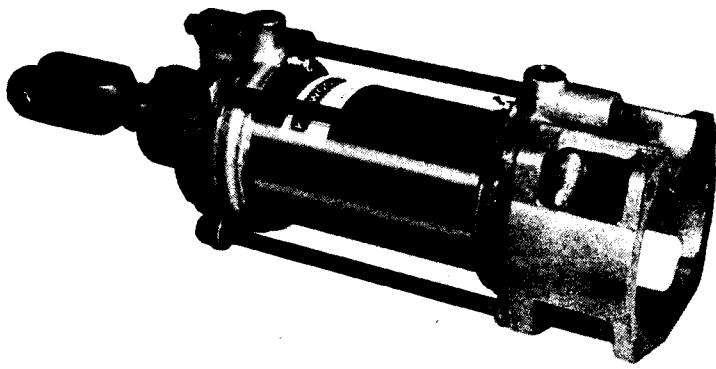


Pin Included with Cylinder

Bore	A	B	C	D	E	F	G	H	J	K	L	M	N	O	P	Q	R	S	V	W
4	3 $\frac{3}{4}$	1 $\frac{1}{4}$	$\frac{7}{8}$	14	$\frac{3}{8}$	1 $\frac{5}{8}$	8 $\frac{1}{2}$	4 $\frac{5}{8}$	1 $\frac{1}{8}$	2 $\frac{5}{8}$	2	$\frac{3}{4}$	$\frac{3}{4}$	1 $\frac{1}{4}$	1 $\frac{5}{16}$	1 $\frac{1}{16}$	2	5 $\frac{1}{4}$	2 $\frac{3}{4}$	$\frac{3}{4}$
6	5 $\frac{3}{8}$	2	1 $\frac{1}{2}$	12	$\frac{3}{4}$	2	11 $\frac{1}{4}$	6 $\frac{1}{4}$	1 $\frac{1}{2}$	3 $\frac{1}{8}$	2 $\frac{3}{4}$	1	1 $\frac{1}{8}$	1 $\frac{1}{8}$	1 $\frac{3}{8}$	1 $\frac{1}{16}$	3	7 $\frac{3}{4}$	3 $\frac{3}{8}$	1 $\frac{1}{16}$

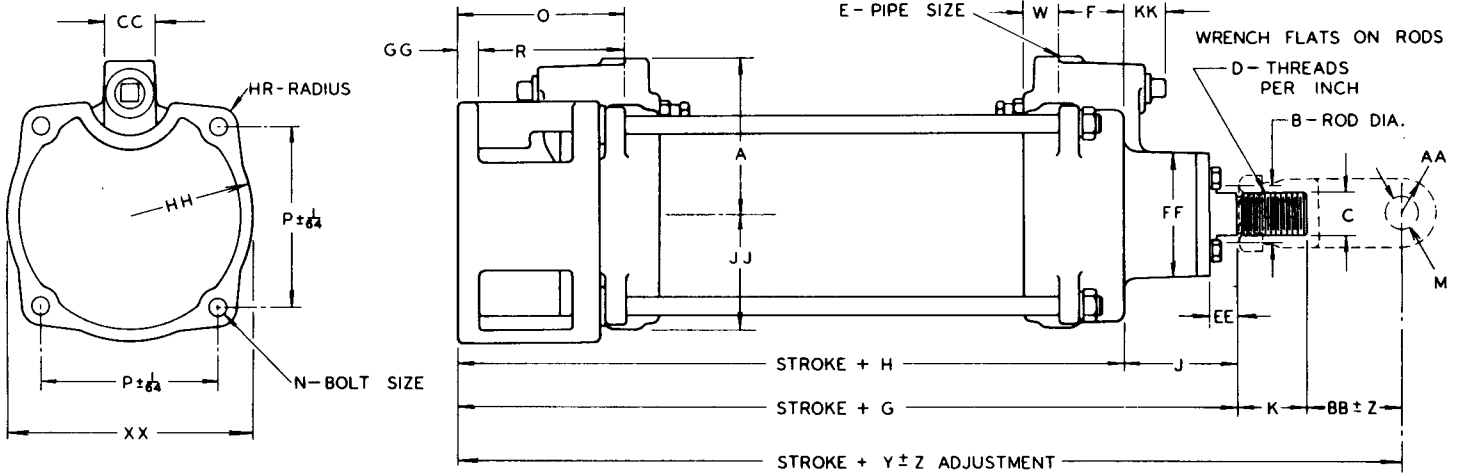
  

Bore	Y	Z	AA	BB	CC	DD	EE	FF	JJ	BC	BR	Bore	APPROXIMATE SHIPPING WEIGHTS	
4	12 $\frac{1}{16}$	$\frac{3}{16}$	1 $\frac{1}{16}$	2 $\frac{1}{16}$	1 $\frac{1}{4}$	2	$\frac{5}{8}$	3	21 $\frac{1}{16}$	6	1 $\frac{1}{32}$	4	Base Weight 24 lbs. + 1 lb./in. Stroke	
6	17	$\frac{3}{16}$	1 $\frac{1}{8}$	3 $\frac{3}{8}$	1 $\frac{1}{8}$	2 $\frac{3}{8}$	1 $\frac{1}{16}$	4	3 $\frac{3}{8}$	8 $\frac{3}{8}$	2 $\frac{1}{32}$	6	Base Weight 80 lbs. + 2 lb./in. Stroke	



# Style No. 8 BASE MOUNTED BLIND END

250 PSI - STEEL HEADS AND MOUNTINGS

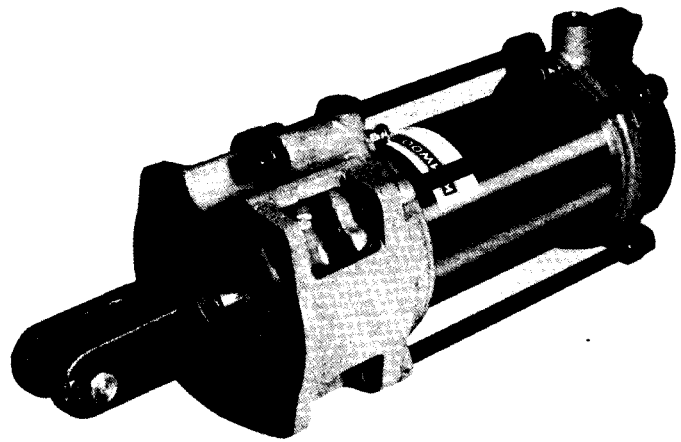


All Dimensions Are in Inches

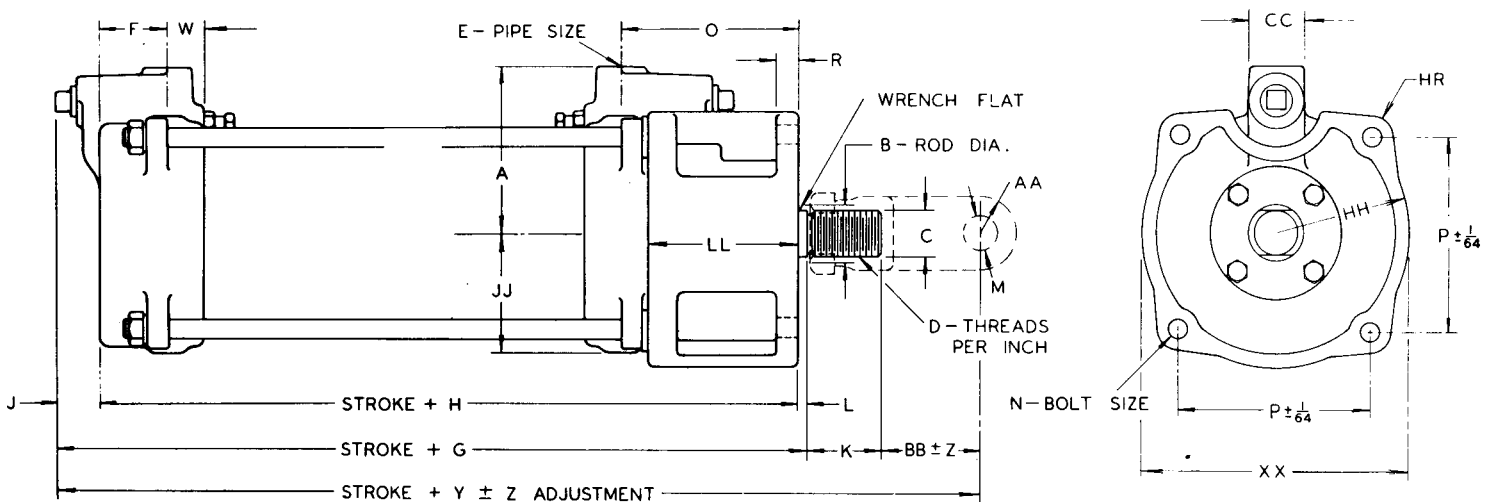
Bore	A	B	C	D	E	F	G	H	J	K	M	N	O	P	R	W	Y	Z	AA
4	3 <sup>3</sup> / <sub>4</sub>	1 <sup>1</sup> / <sub>4</sub>	7 <sup>7</sup> / <sub>8</sub>	14	3 <sup>3</sup> / <sub>8</sub>	1 <sup>5</sup> / <sub>8</sub>	9 <sup>5</sup> / <sub>8</sub>	3 <sup>1</sup> / <sub>2</sub>	2 <sup>5</sup> / <sub>8</sub>	2	3 <sup>3</sup> / <sub>4</sub>	7 <sup>1</sup> / <sub>6</sub>	4	4 <sup>1</sup> / <sub>4</sub>	2 <sup>7</sup> / <sub>8</sub>	3 <sup>3</sup> / <sub>4</sub>	13 <sup>1</sup> / <sub>6</sub>	3 <sup>1</sup> / <sub>6</sub>	13 <sup>1</sup> / <sub>6</sub>
6	5 <sup>3</sup> / <sub>8</sub>	2	1 <sup>1</sup> / <sub>2</sub>	12	3 <sup>3</sup> / <sub>4</sub>	2	12 <sup>1</sup> / <sub>8</sub>	5	3 <sup>3</sup> / <sub>8</sub>	2 <sup>3</sup> / <sub>4</sub>	1	5 <sup>5</sup> / <sub>8</sub>	4 <sup>3</sup> / <sub>4</sub>	5 <sup>1</sup> / <sub>6</sub>	3 <sup>3</sup> / <sub>8</sub>	1 <sup>3</sup> / <sub>6</sub>	17 <sup>7</sup> / <sub>8</sub>	3 <sup>1</sup> / <sub>6</sub>	1 <sup>1</sup> / <sub>8</sub>

Bore	BB	CC	EE	FF	GG	HH	JJ	KK	XX	HR	Bore	APPROXIMATE SHIPPING WEIGHTS
4	2 <sup>5</sup> / <sub>6</sub>	1 <sup>1</sup> / <sub>4</sub>	5 <sup>5</sup> / <sub>8</sub>	3	1 <sup>1</sup> / <sub>2</sub>	3	2 <sup>11</sup> / <sub>6</sub>	1 <sup>1</sup> / <sub>8</sub>	6	1 <sup>15</sup> / <sub>32</sub>	4	Base Weight 27.5 lbs. + 1 lb./in. Stroke
6	3 <sup>3</sup> / <sub>8</sub>	1 <sup>1</sup> / <sub>8</sub>	3 <sup>3</sup> / <sub>4</sub>	4	5 <sup>5</sup> / <sub>8</sub>	4 <sup>5</sup> / <sub>6</sub>	3 <sup>7</sup> / <sub>8</sub>	1 <sup>1</sup> / <sub>2</sub>	8 <sup>5</sup> / <sub>8</sub>	2 <sup>1</sup> / <sub>32</sub>	6	Base Weight 87 lbs. + 2 lb./in. Stroke

# Style No. 9 BASE MOUNTED ROD END



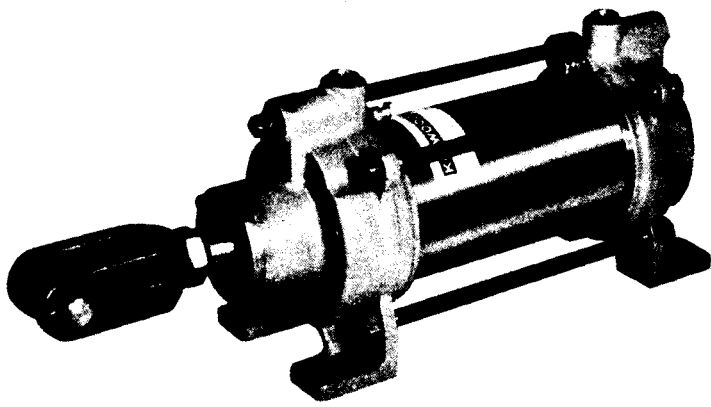
## 250 PSI – STEEL HEADS AND MOUNTINGS



All Dimensions Are in Inches

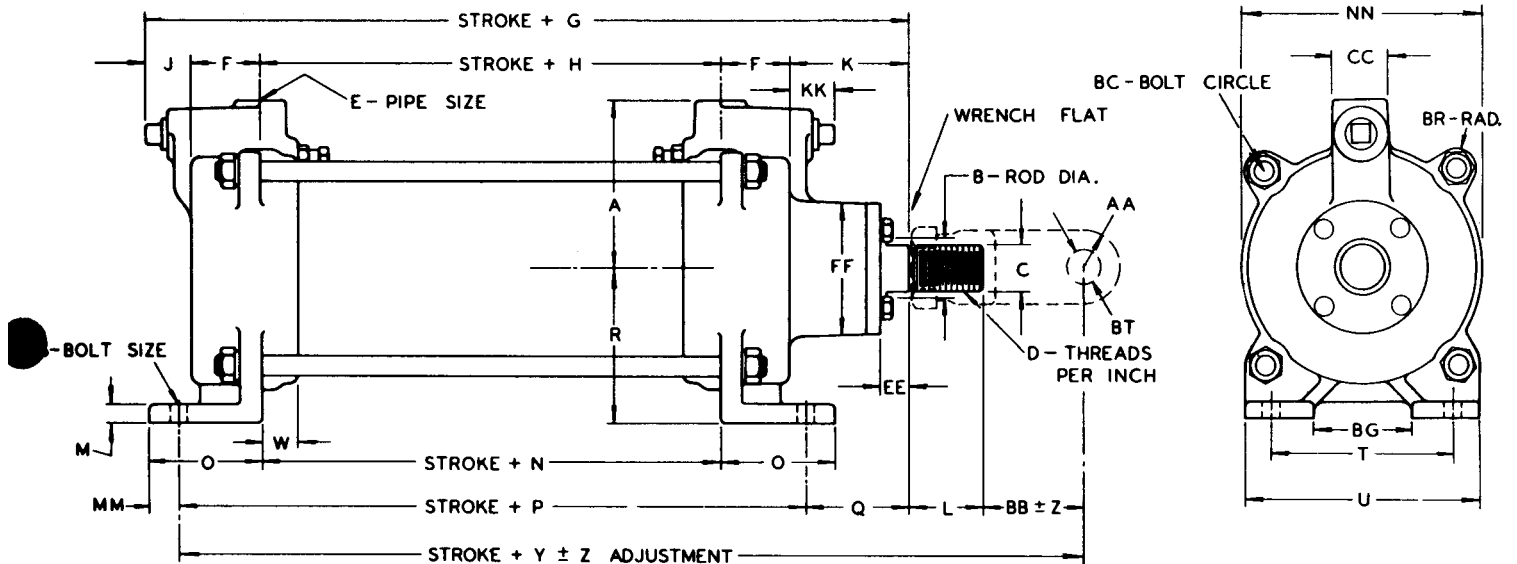
Bore	A	B	C	D	E	F	G	H	J	K	L	M	N	O	P	R	W	Y
4	3 $\frac{3}{4}$	1 $\frac{1}{4}$	$\frac{7}{8}$	14	$\frac{3}{8}$	1 $\frac{5}{8}$	8 $\frac{3}{8}$	7	1 $\frac{1}{8}$	2	$\frac{1}{4}$	$\frac{3}{4}$	$\frac{7}{16}$	4	4 $\frac{1}{4}$	$\frac{1}{2}$	$\frac{3}{4}$	12 $\frac{5}{8}$
6	5 $\frac{3}{8}$	2	1 $\frac{1}{2}$	12	$\frac{3}{4}$	2	10 $\frac{5}{8}$	9	1 $\frac{1}{2}$	2 $\frac{3}{4}$	$\frac{3}{8}$	1	$\frac{5}{8}$	4 $\frac{3}{4}$	5 $\frac{5}{16}$	$\frac{9}{16}$	1 $\frac{3}{16}$	16 $\frac{5}{8}$

Bore	Z	AA	BB	CC	HH	JJ	LL	XX	HR	Bore	APPROXIMATE SHIPPING WEIGHTS
4	$\frac{3}{16}$	1 $\frac{1}{16}$	2 $\frac{3}{16}$	1 $\frac{1}{4}$	3	2 $\frac{1}{16}$	3 $\frac{3}{8}$	6	1 $\frac{1}{32}$	4	Base Weight 27.5 lbs. + 1 lb./in. Stroke
6	$\frac{3}{16}$	1 $\frac{1}{8}$	3 $\frac{3}{8}$	1 $\frac{1}{8}$	4 $\frac{5}{16}$	3 $\frac{7}{8}$	4	8 $\frac{5}{8}$	2 $\frac{1}{32}$	6	Base Weight 87 lbs. + 2 lb./in. Stroke



# Style No. 10 FOOT MOUNTED

## 250 PSI - STEEL HEADS AND MOUNTINGS

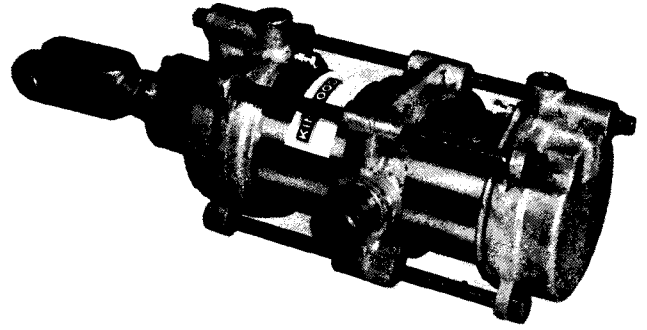


All Dimensions Are in Inches

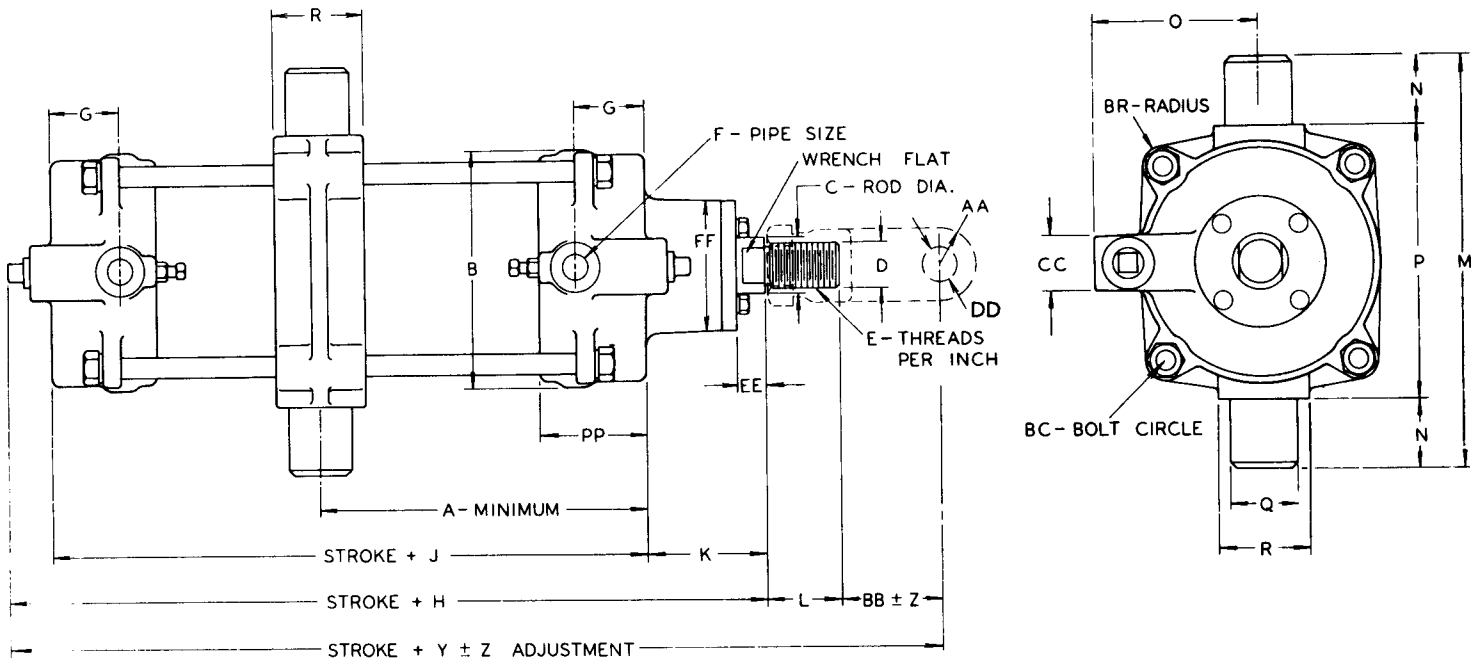
Dia.	A	B	C	D	E	F	G	H	J	K	L	M	N	O	P	Q	R	S	T	U	W	Y
4	3 $\frac{3}{4}$	1 $\frac{1}{4}$	$\frac{7}{8}$	14	$\frac{3}{8}$	1 $\frac{5}{8}$	8 $\frac{3}{8}$	1 $\frac{3}{8}$	1 $\frac{1}{8}$	2 $\frac{3}{8}$	2	$\frac{3}{8}$	1 $\frac{3}{8}$	2 $\frac{3}{8}$	5 $\frac{5}{8}$	2 $\frac{3}{8}$	3 $\frac{1}{2}$	$\frac{3}{8}$	4	5 $\frac{1}{4}$	$\frac{3}{4}$	11 $\frac{1}{4}$
6	5 $\frac{3}{8}$	2	1 $\frac{1}{2}$	12	$\frac{3}{4}$	2	10 $\frac{7}{8}$	2 $\frac{1}{4}$	1 $\frac{1}{2}$	3 $\frac{3}{8}$	2 $\frac{3}{4}$	$\frac{7}{16}$	2 $\frac{1}{4}$	3	6 $\frac{3}{4}$	2 $\frac{3}{4}$	5 $\frac{5}{8}$	$\frac{3}{4}$	5 $\frac{1}{2}$	7	1 $\frac{3}{16}$	15 $\frac{1}{4}$

Bore	Z	AA	BB	CC	EE	FF	KK	MM	NN	BC	BG	BR	BT	Bore	APPROXIMATE SHIPPING WEIGHTS	
4	$\frac{3}{16}$	1 $\frac{1}{16}$	2 $\frac{3}{16}$	1 $\frac{1}{4}$	$\frac{5}{8}$	3	1 $\frac{1}{8}$	$\frac{1}{2}$	5 $\frac{5}{8}$	6	2 $\frac{1}{4}$	1 $\frac{1}{32}$	$\frac{3}{4}$	4	Base Weight	26 lbs. + 1 lb./in. Stroke
6	$\frac{3}{16}$	1 $\frac{1}{8}$	3 $\frac{3}{8}$	1 $\frac{1}{8}$	$\frac{3}{4}$	4	1 $\frac{1}{2}$	$\frac{3}{4}$	7 $\frac{3}{4}$	8 $\frac{3}{8}$	3	2 $\frac{1}{32}$	1	6	Base Weight	86.5 lbs. + 2 lb./in. Stroke

# Style No. 11 TRUNNION MOUNTED



## 250 PSI - STEEL HEADS AND MOUNTINGS

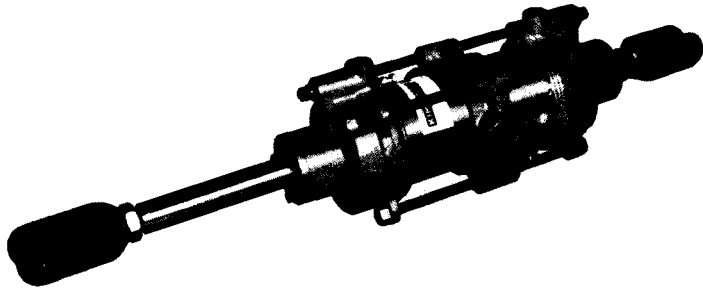


All Dimensions Are in Inches

Dia.	A	B	C	D	E	F	G	H	J	K	L	M	N	O	P	Q	R	Y	Z
4	4 $\frac{3}{4}$	5 $\frac{1}{4}$	1 $\frac{1}{4}$	$\frac{7}{8}$	14	$\frac{3}{8}$	1 $\frac{5}{8}$	8 $\frac{3}{8}$	4 $\frac{5}{8}$	2 $\frac{5}{8}$	2	9	1 $\frac{1}{2}$	3 $\frac{3}{4}$	6	1 $\frac{1}{8}$	2	12 $\frac{5}{8}$	$\frac{3}{16}$
6	5 $\frac{1}{4}$	7 $\frac{3}{4}$	2	1 $\frac{1}{2}$	12	$\frac{3}{4}$	2	10 $\frac{7}{8}$	6 $\frac{1}{4}$	3 $\frac{1}{8}$	2 $\frac{3}{4}$	11 $\frac{1}{2}$	1 $\frac{3}{4}$	5 $\frac{3}{8}$	8	1 $\frac{1}{8}$	3	16 $\frac{5}{8}$	$\frac{3}{16}$

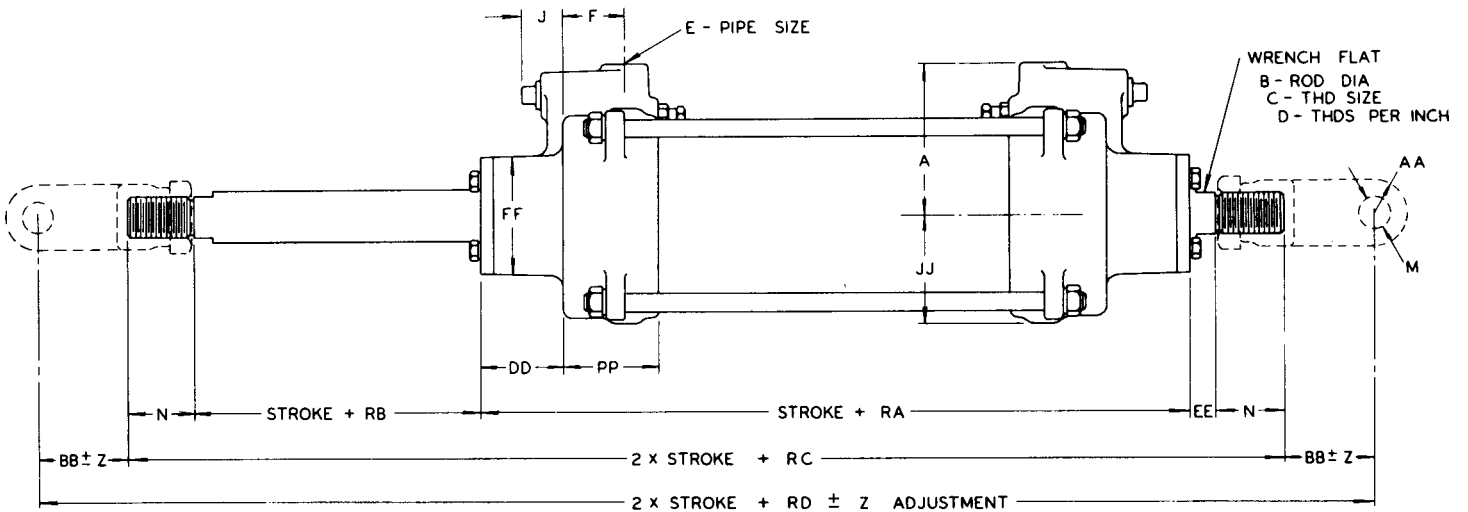
Bore	AA	BB	CC	DD	EE	FF	PP	BC	BR	Bore	APPROXIMATE SHIPPING WEIGHTS
4	1 $\frac{3}{16}$	2 $\frac{3}{16}$	1 $\frac{1}{4}$	$\frac{3}{4}$	$\frac{5}{8}$	3	2 $\frac{3}{8}$	6	1 $\frac{5}{32}$	4	Base Weight 29 lbs. + 1 lb./in. Stroke
6	1 $\frac{1}{8}$	3 $\frac{3}{8}$	1 $\frac{7}{8}$	1	$\frac{3}{4}$	4	3 $\frac{3}{16}$	8 $\frac{3}{8}$	2 $\frac{1}{32}$	6	Base Weight 90.5 lbs. + 2 lb./in. Stroke

NOTE: Specify Desired Dimension "A" When Ordering This Cylinder



# Style No. 18 DOUBLE ROD

## 250 PSI – STEEL HEADS AND MOUNTINGS

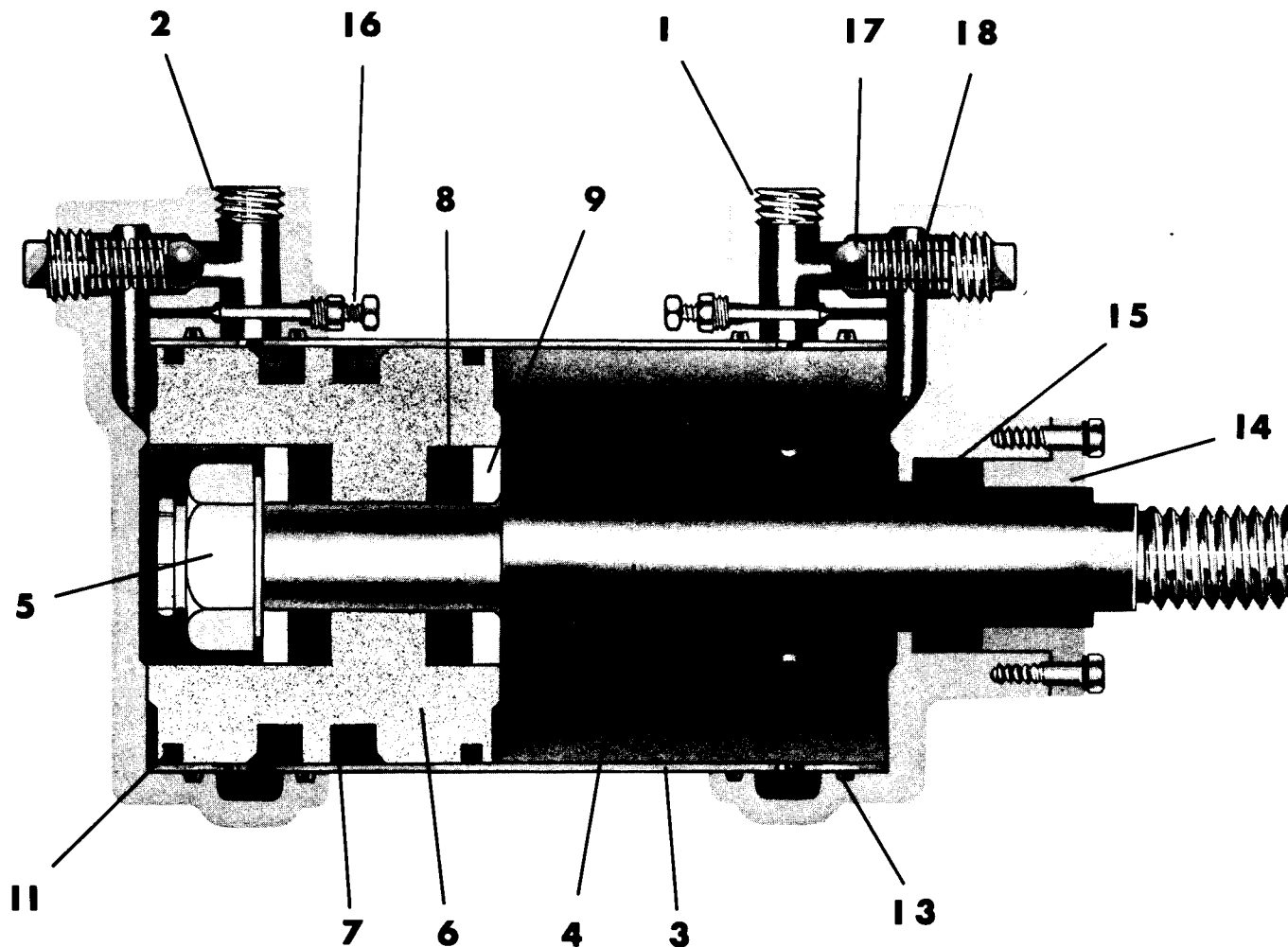


This cylinder can use foot mounts, flange mounts, or trunnion mounting.  
See respective pages for end dimensions.

All Dimensions Are in Inches

Bore	A	B	C	D	E	F	J	M	N	Z	AA	BB	DD	EE	FF	JJ
4	3 $\frac{3}{4}$	1 $\frac{1}{4}$	$\frac{7}{8}$	14	$\frac{3}{8}$	1 $\frac{5}{8}$	1 $\frac{1}{8}$	$\frac{3}{4}$	2	$\frac{3}{16}$	1 $\frac{1}{8}$	2 $\frac{3}{8}$	2	$\frac{5}{8}$	3	2 $\frac{1}{4}$
6	5 $\frac{3}{8}$	2	1 $\frac{1}{2}$	12	$\frac{3}{4}$	2	1 $\frac{1}{2}$	1	2 $\frac{3}{4}$	$\frac{3}{16}$	1 $\frac{1}{8}$	3 $\frac{3}{8}$	2 $\frac{3}{8}$	$\frac{3}{4}$	4	3 $\frac{3}{8}$

Bore	PP	RA	RB	RC	RD	Bore	APPROXIMATE SHIPPING WEIGHTS
4	2 $\frac{3}{8}$	8 $\frac{5}{8}$	$\frac{5}{8}$	13 $\frac{1}{8}$	17 $\frac{3}{4}$	4	Base Weight 33 lbs. + 1.4 lb./in. Stroke
6	3 $\frac{3}{8}$	11	$\frac{3}{4}$	17 $\frac{1}{4}$	24	6	Base Weight 90 lbs. + 3 lb./in. Stroke



## PARTS LIST FOR 4" & 6" CYLINDERS

Ref. No.	Name	Part No.		No. Req'd Per Cyl.	Ref. No.	Name	Part No.		No. Req'd Per Cyl.
		4" Cyl.	6" Cyl.				4" Cyl.	6" Cyl.	
1	Rod End Head..	4B- 1	6B- 1	1	14	Packing Bushing .....	4B-15	6B-15	1
2	Blind End Head	4B- 2	6B- 2	1	15	Packing "V" Ring .....	4B-16	6B-16	1 Set
3	Barrel † .....	4B- 3	6B- 3	1	16	Needle Valve Assemblies .....	4B-17	6B-17	2
Not Shown	Tie Bolts † .....	4B- 4	6B- 4	4	17	Ball .....	4B-18	6B-18	2
4	Piston Rod † .....	4B- 5	6B- 5	1	18	Spring .....	4B-19	6B-19	2
5	Lock Nut .....	4B-29	6B-29	1	Not Shown	Pendulum Head .....	4B-22	6B-22	See Page 14
6	One Piece Piston	4B-30	6B-30	1	Not Shown	Rod Clevis .....	4B-23	6B-23	See Page 11
7	Packing Cups ....	4B-31	6B-31	2	Not Shown	Trunnion .....	4B-24	6B-24	See Page 18
8	Impact Bushing..	4B-36	6B-36	2	Not Shown	Foot Mounted Rod End Head .....	4B-25	6B-25	See Page 17
9	Impact Washer..	4B-37	6B-37	2	Not Shown	Foot Mounted Blind End Head....	4B-26	6B-26	See Page 17
11	Piston Rings .....	4B-12	6B-12	2	Not Shown	Base Mount .....	4B-27	6B-27	See Pages 15-16
13	"O" Rings .....	4B-14	6B-14	4					
Not Shown	Piston Rod for DBL Rod Cyl., (Female Half) ..	4B-44	6B-44	See Pg. 19					

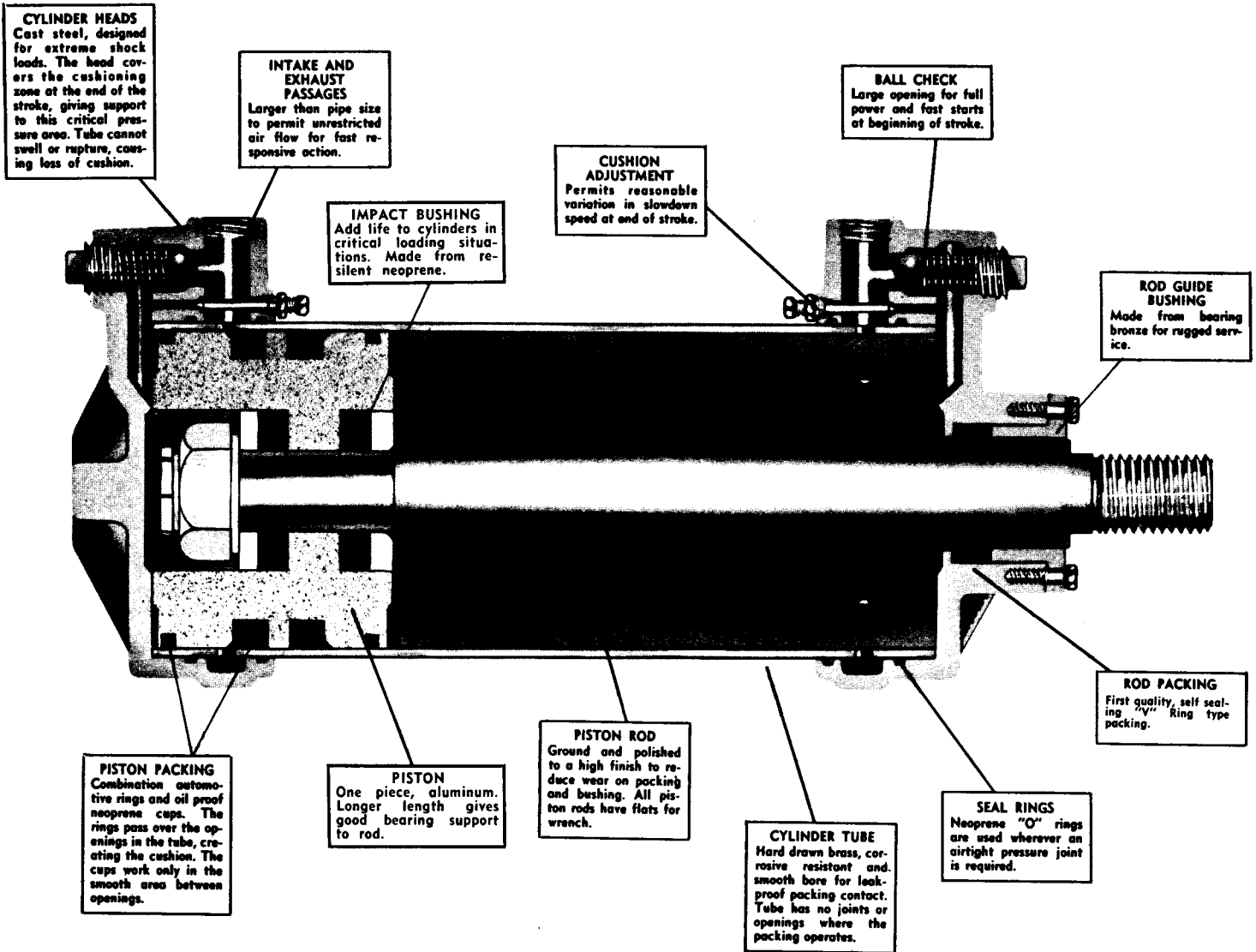
### IMPORTANT!

† Always include the length of stroke when re-ordering barrels, tie bolts, or piston rods.



# KIMWOOD HEAVY DUTY 8" AIR CYLINDERS

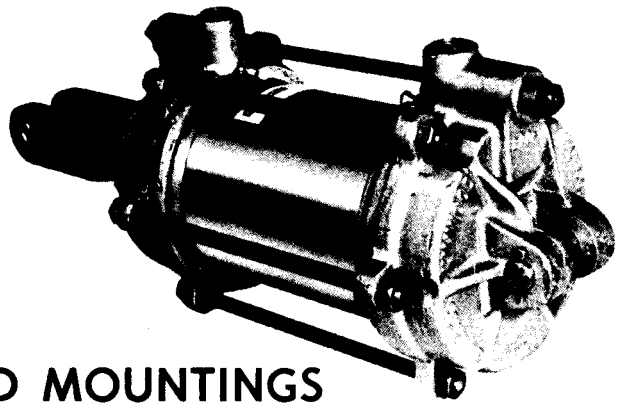
For Operating Pressures Up To 250 psi



*Webbed Steel Heads!*  
*Impact Bushings!*  
*Adjustable Cushions!*

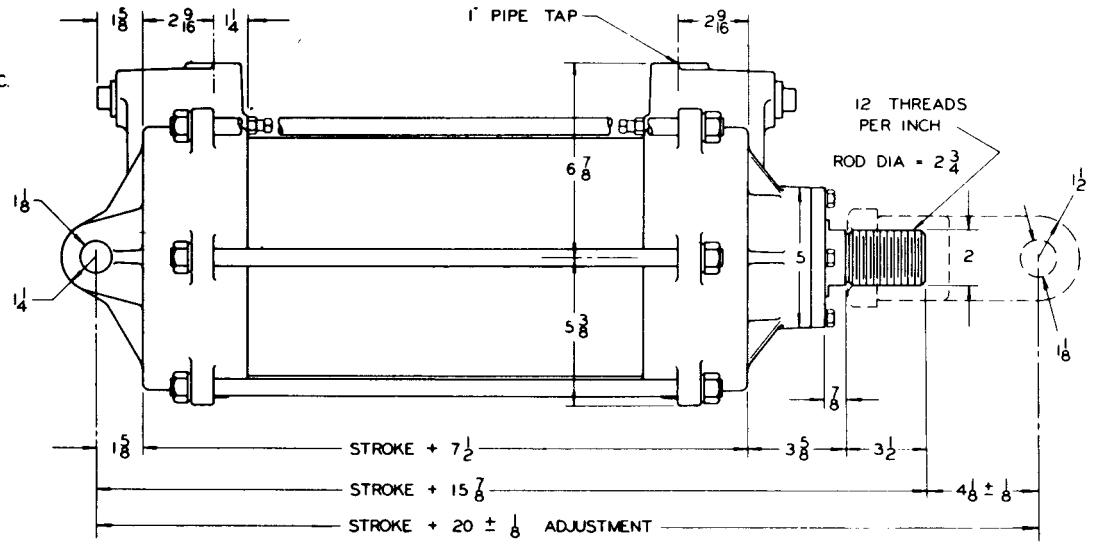
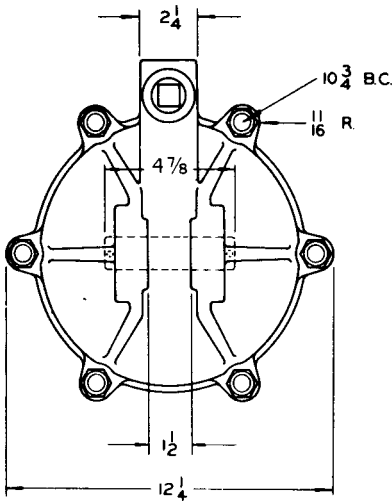
*Integral Mountings!*  
*One-Piece Piston!*  
*6-Ton Capacity!*

# Style No. 12 PENDULUM MOUNTED

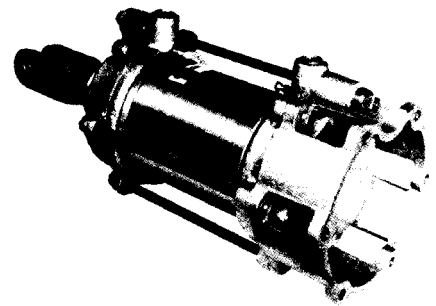


## 250 PSI - STEEL HEADS AND MOUNTINGS

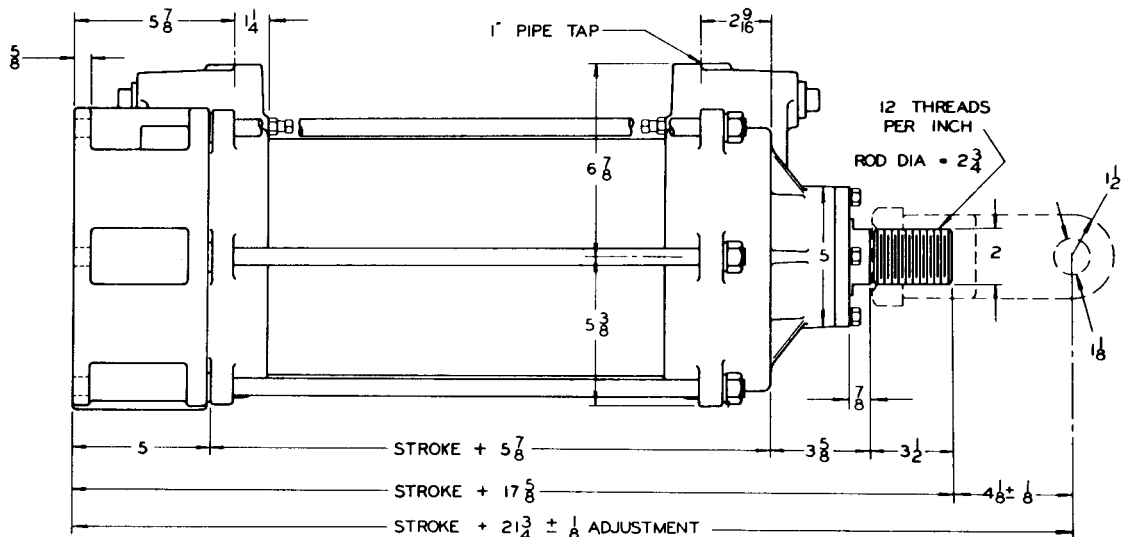
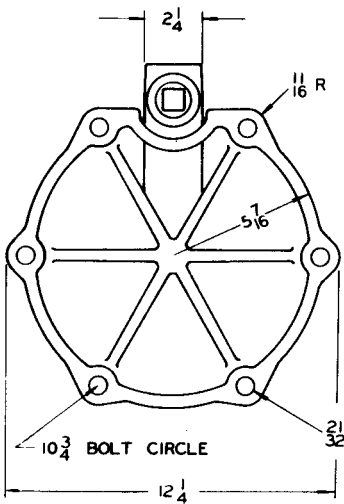
Shipping Wt. 144 lbs. + 4.2 lb./in. Stroke

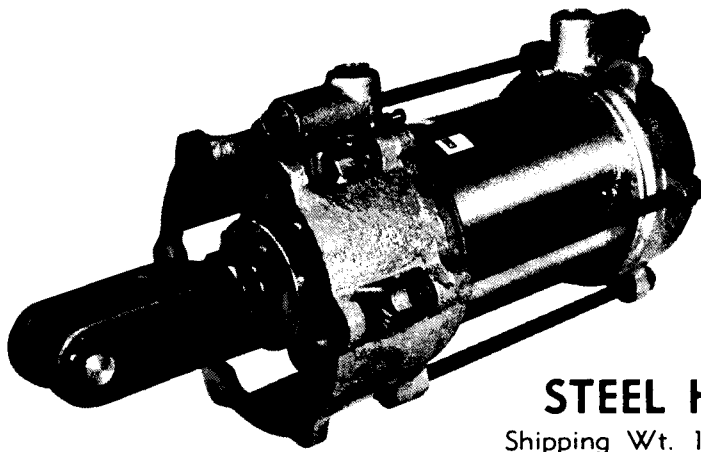


# Style No. 13 BASE MOUNTED BLIND END



Shipping Wt. 158 lbs. + 4.2 lb./in. Stroke

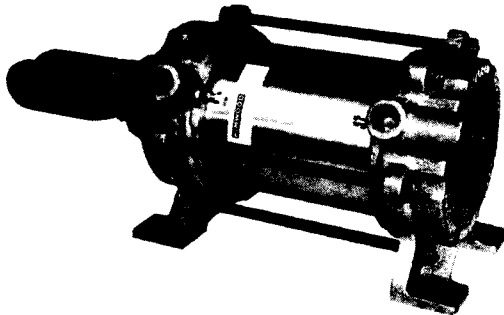
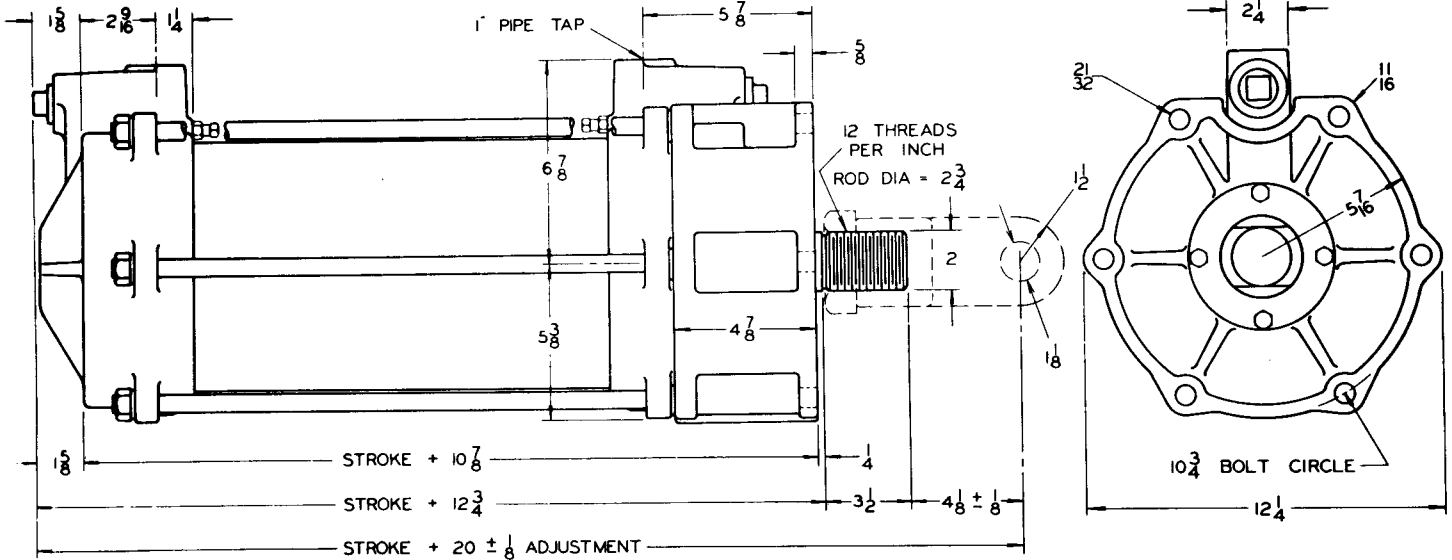




# Style No. 14 BASE MOUNTED ROD END 250 PSI

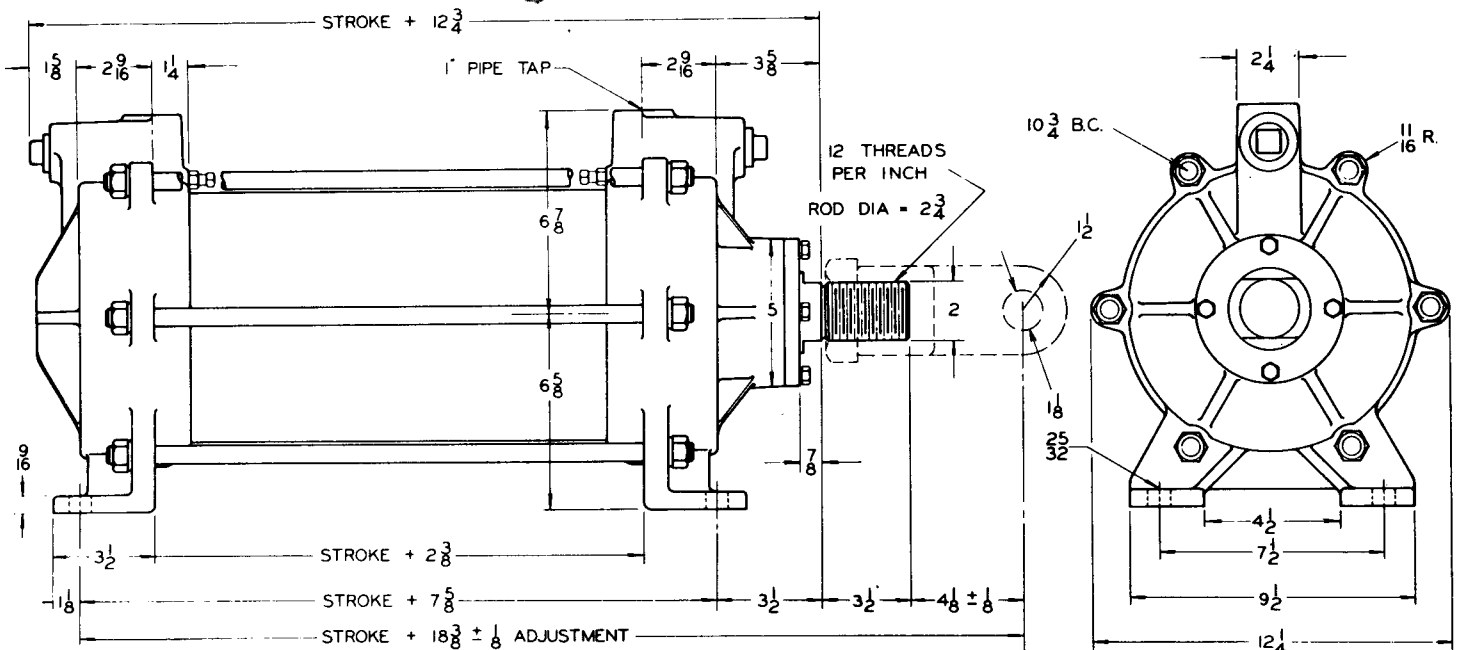
## STEEL HEADS AND MOUNTINGS

Shipping Wt. 158 lbs. + 4.2 lb./in. Stroke

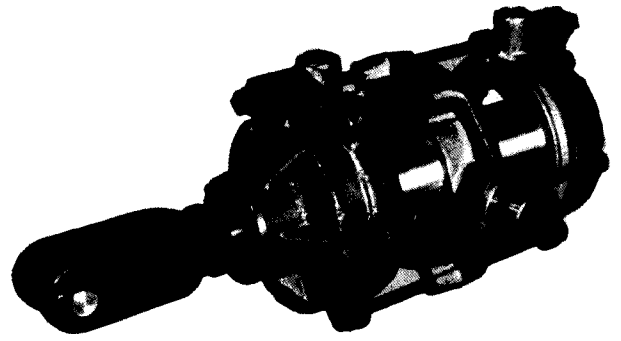


# Style No. 15 FOOT MOUNTED

Shipping Wt. 155 lbs. + 4.2 lb./in. Stroke

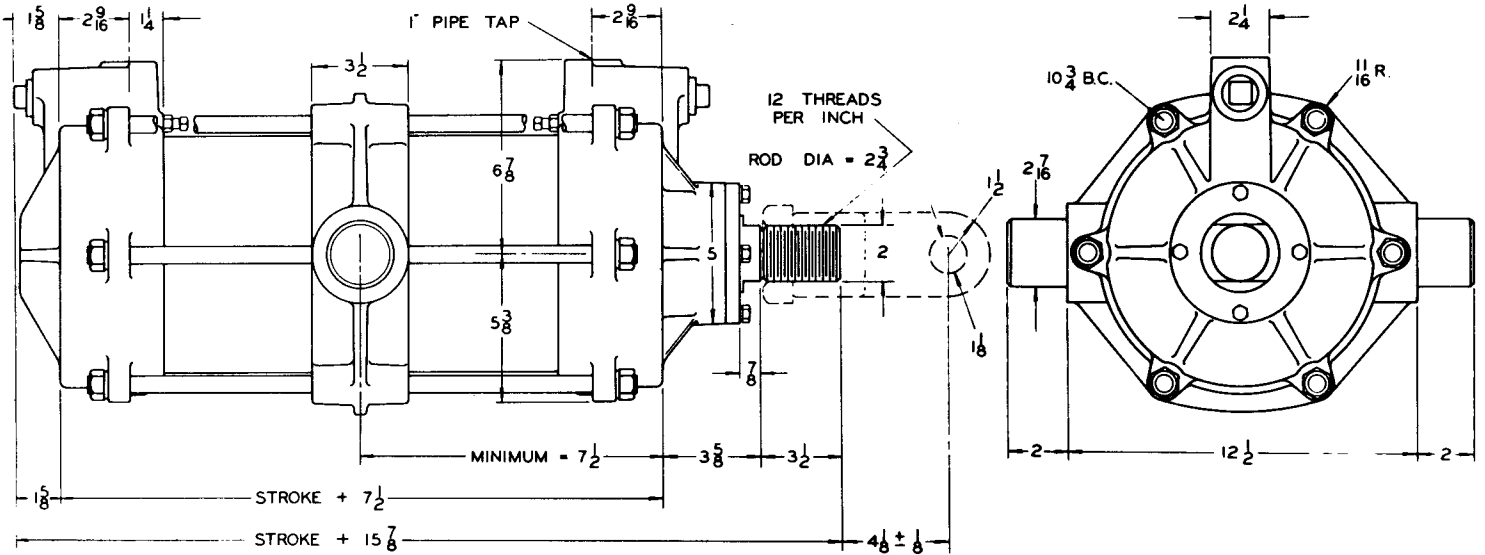


# Style No. 16 TRUNNION MOUNTED

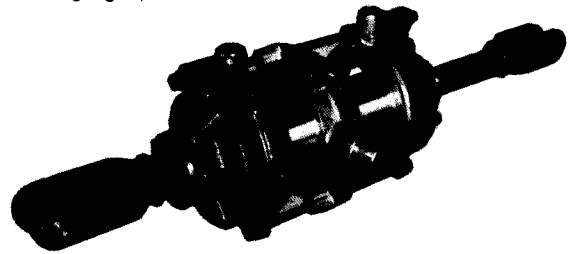


## 250 PSI - STEEL HEADS AND MOUNTINGS

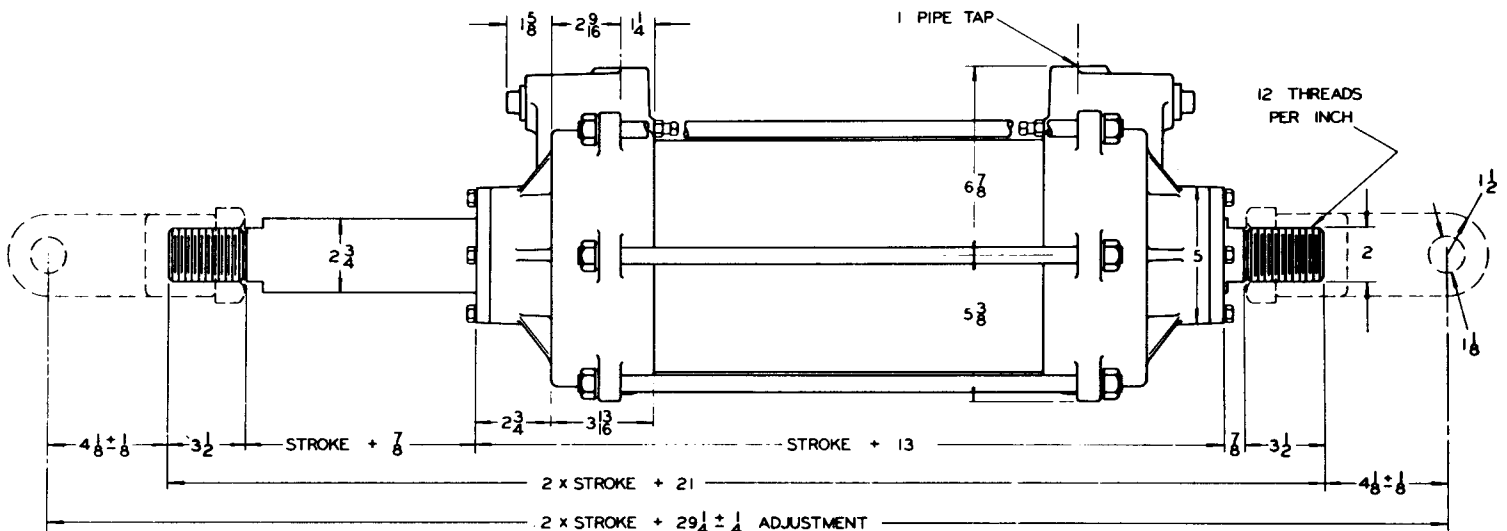
Shipping Wt. 168 lbs. + 4.2 lb./in. Stroke

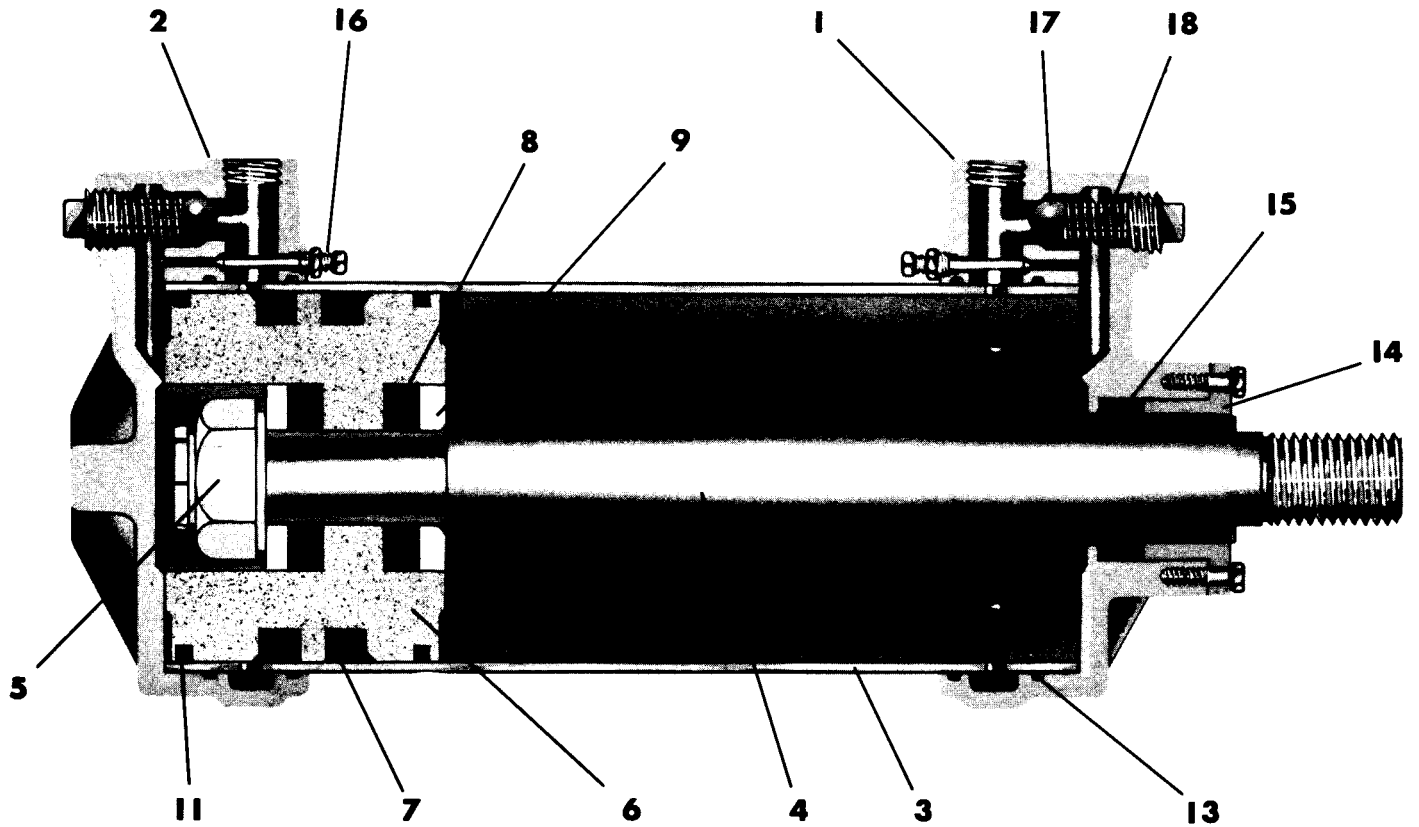


# Style No. 19 DOUBLE ROD



Shipping Wt. 172 lbs. + 6 lb./in. Stroke





## PARTS LIST FOR 8" CYLINDERS

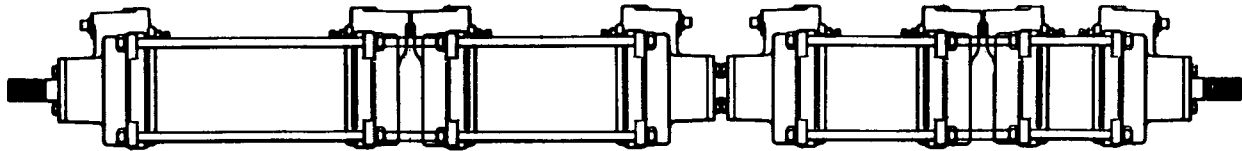
Ref. No.	Name	Part No.	No. of Each Req'd Per Cylinder	Ref. No.	Name	Part No.	No. of Each Req'd Per Cylinder
1	Rod End Head .....	8B- 1	1	14	Packing Bushing .....	8B-15	1
2	Blind End Head .....	8B- 2	1	15	Packing "V" Ring .....	8B-16	1 Set
3	Barrel .....	8B- 3	1	16	Needle Valve Assemblies .....	8B-17	2
Not Shown	Tie Bolts .....	8B- 4	6	17	Ball .....	8B-18	2
4	Piston Rod .....	8B- 5	1	18	Spring .....	8B-19	2
5	Lock Nut .....	8B-29	1	Not Shown	Pendulum Head .....	8B-22	See Pg. 22
6	One Piece Piston .....	8B-30	1	Not Shown	Rod Clevis .....	8B-23	See Pg. 10
7	U Packing Cups .....	8B-31	2	Not Shown	Trunnion .....	8B-24	See Pg. 24
8	Impact Bushings .....	8B-36	2	Not Shown	Foot Mounted Rod End Head..	8B-25	See Pg. 23
9	Impact Washers .....	8B-37	2	Not Shown	Foot Mounted Blind End Head .	8B-26	See Pg. 23
Not Shown	Piston Rod for DBL End Cylinder—Female Half .....	8B-44	See Pg. 24	Not Shown	Base Mount .....	8B-27	See Pages 22-23
11	Piston Rings .....	8B-12	2				
13	"O" Rings .....	8B-14	4				

**IMPORTANT** — Always include the length of stroke when re-ordering barrels, tie bolts, or piston rods.

# SPECIAL AIR CYLINDERS

Custom built cylinders of any size up to 24" bore x 8' stroke and custom cylinder mountings can be made on special order.

Two-stage cylinders can easily be assembled by backing two stock cylinders together. This will provide the sometimes-desired short stroke- long stroke, and double stroke combination all in one air package.



## 16 Position Cylinder Package

Three or more cylinders with tandem connections provide a variety of positioning combinations. The four cylinder package shown in the sketch provides 16 different positions. These cylinder packages can be used in a multitude of ways where exact positioning, strong holding power, and inexpensive operation are a must. Multiple stage packages can be made from any cylinder in this catalog to customers' exact specifications. For estimates and dimensions, consult factory.

All Kimwood air cylinders can have extended tie bolts when desired. Include the extension desired and the end of the cylinder on which the extension is to be.

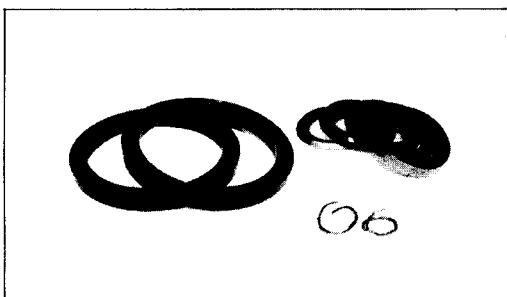
---

## Repair Kits

Repair kits for all Kimwood cylinders are available at 10% savings over the component parts. Two types of kits are shown here, a packing kit containing the necessary packings and the complete repair kit.

### PACKING KIT

- CONTAINS: 1. "V" Ring Packing Set for Rod  
2. Piston U Cups  
3. Needle Valve Packing



### COMPLETE REPAIR KIT

- CONTAINS: 1. "V" Ring Packing Set for Rod  
2. Piston U Cups  
3. Needle Valve Packing  
4. Piston Rings  
5. Impact Bushings  
6. Barrel "O" Rings

